



# PENN LOCK CORP.

21 Noyes Avenue • Swoyersville, PA 18704 • Tel: 570-288-5547 • Fax: 570-287-4750

## MAILBOX LOCKS

### Genuine XL Pin Tumbler Factory Replacement Locks

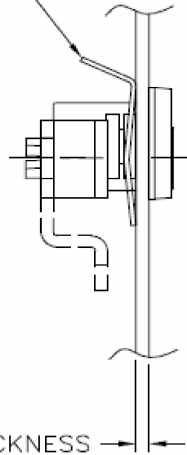
Standard Keyway: XL2

NA12/14, HL1 Keyways Available Upon Request - Please call for details

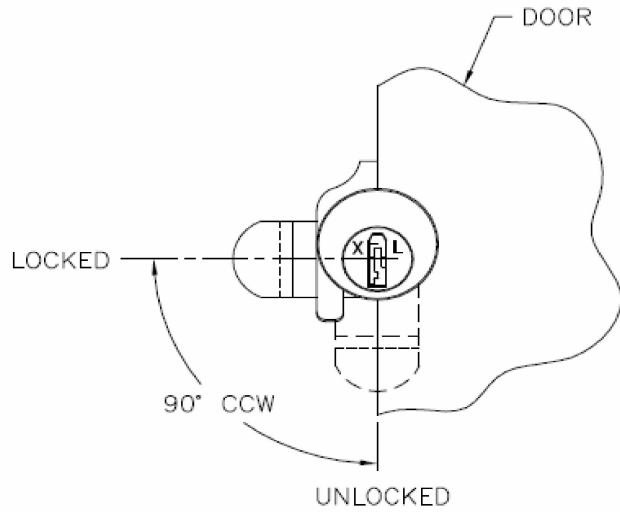
**XL-213-I-XL2**

FINISH: NICKEL

SPRING MOUNTING CLIP



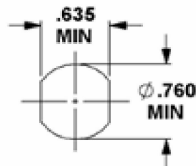
DOOR THICKNESS



**5-PIN TUMBLER  
90° COUNTER CLOCKWISE  
EQUIVALENT TO COMPX/NAT C8713**

LOCK MOUNTING INSTRUCTIONS:  
1 - INSERT LOCK INTO DOUBLE "D" HOLE  
2 - SLIDE SPRING MOUNTING CLIP INTO SLOTS ON LOCK CYLINDER

#### CYLINDER MOUNTING HOLE DIMENSIONS



Supplied with two keys and one retaining clip

**Replaces Auth Electric  
(Prior to 1995)  
Mailbox Locks**